



# unIFY Control Panel

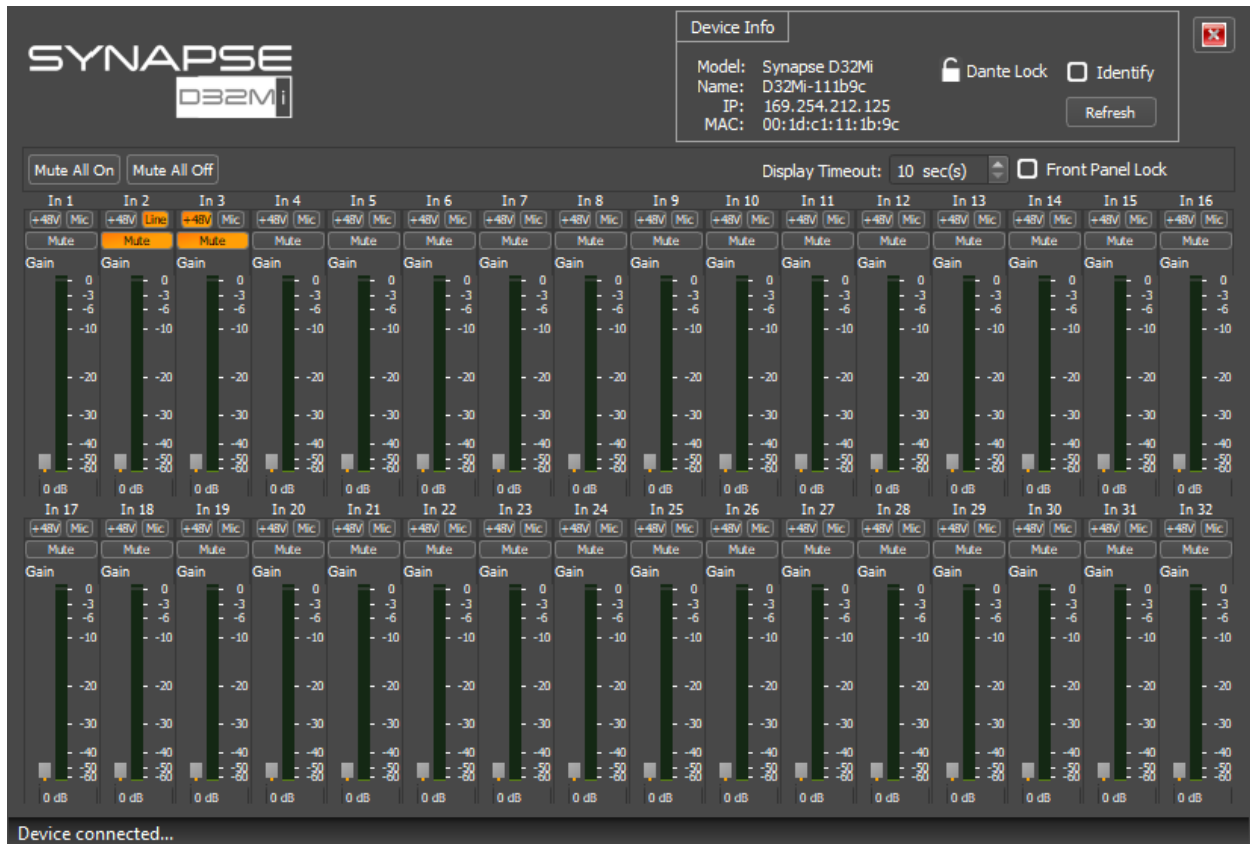
## Synapse D32Mi Configuration



QSC, LLC • 1675 MacArthur Boulevard • Costa Mesa, CA 92626  
Ph: 800/854-4079 or 714/957-7100 • Fax: 714/754-6174

© 2020 QSC, LLC all rights reserved. QSC and the QSC logo are registered trademarks of QSC, LLC in the U.S. Patent and Trademark office and other countries. All other trademarks are the property of their respective owners. Patents may apply or be pending.

[www.qsc.com](http://www.qsc.com)



## Mute All On/Off

Clicking the “Mute All On” activate the mute function on all 32 inputs simultaneously. Conversely, the “Mute All Off” deactivates it. Individual mute states are not maintained when these functions are used.

## Front Panel Lock

Activating the “Front Panel Lock” option will prevent users from changing the monitoring settings from the front panel of the D32Mi. When enabled, the monitor facility is locked to whatever channel was selected when the lock is applied.

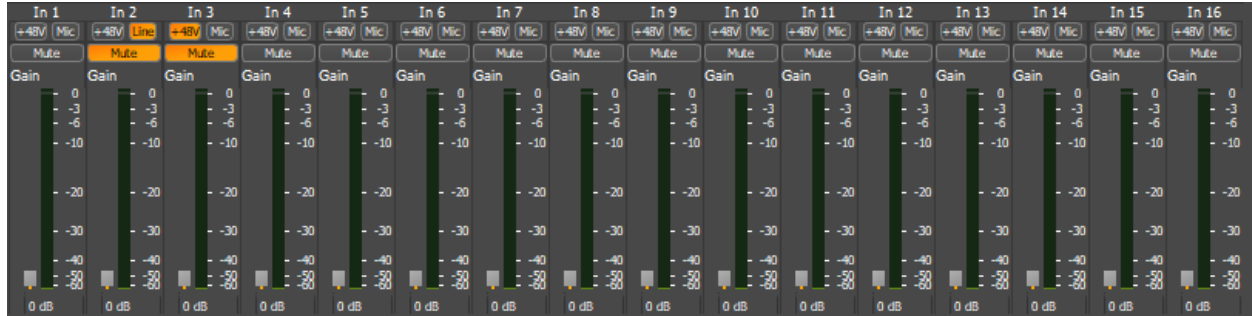
## Display Timeout

Clicking the up/down arrows will adjust the time of inactivity before the display goes into sleep mode. The default setting is 30 seconds. (10 - 360 seconds)

## Pre/Post Metering

The D32Mi has two modes of metering. Switching between these modes can be come any time using the appropriate radio buttons. The pre-metering mode shows the levels of the audio signals received directly from the Dante™ flows prior to any adjustments the D32Mi may make. Post- meters show the levels sent to the local outputs after all audio adjustments the D32Mi may make.

## Input Controls



The 32 inputs have the following control options available per channel:

- Mute
- P48 Phantom Power
- Mic/Line Level Input Select
- Preamp Level Control

### Channel Mute

Each input has its own mute. The state of the button indicates its state with dark grey meaning the mute is inactive and orange indicating the mute is active. Click the button to change the mute state.

### P48 Phantom Power

Each input has its own P48V phantom power option. The state of the button indicates its state with dark grey meaning the phantom power is inactive and orange indicating the phantom power is active. Click the button to change the state.

### Mic/Line Level Input Selector

Each input has its own mic/line level input selector. The state of the button indicates its state with dark grey meaning the Mic input is selected and orange indicating the Line input is selected. Click the button to change the state.

### Preamp Gain

Each input has its own gain control. The slider is just to the left of the channel meter and is adjustable from a minimum of 0dB to a maximum of 51dB. To adjust the volume, click on the slider and drag it either up or down. Alternately, click in the text box below the slider and type in the desired level.